

ARMOREX



Natural Nematicide, Fungicide, Insecticide, and Miticide

FOR MITES

ARMOREX uses natural botanical extracts to create a unique pesticide action. The product kills on contact and repels over time. It is very active against mites.

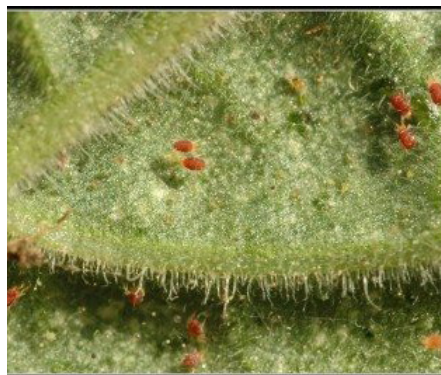
ARMOREX is manufactured in compliance with the USA EPA Minimum Risk Pesticide Regulations, 40 CFR 152.25 (f) and is exempt from registration requirements.

ARMOREX is exempt from a tolerance per USA EPA Reg. Title 40CFR

REI and PHI RESTRICTIONS FOR ALL FOLIAR APPLICATIONS

REI: 24 hours

PHI: 24 hours



BENEFITS

ARMOREX uses natural ingredients to create a unique and effective alternative to chemical pesticides.

ARMOREX contains 15 volatile organic compounds, which minimizes the probability of insect resistance development.

ARMOREX is compatible with most non-ionic surfactants and conventional pesticides.

ARMOREX is an effective component of IPM programs.

ARMOREX, applied as directed and at recommended dosages, does not harm beneficial spiders or dragonflies.



SOILTECH

Soil Technologies Corp. • 2103 185th Street, Fairfield, IA 52556, U.S.A.
Phone 641-472-3963 • FAX 641-472-6189 • www.soiltechcorp.com

ARMOREX

FOR MITES

TECHNICAL DATA



DOSAGE

Dosage: 0.4 to 0.6 fl.oz/gal. (3 to 5 cc/L)

ESTIMATED WATER VOLUME PER ACRE

For crops up to 40 inches or 1 meter height:

Ground Machine Sprayers : 25 gal/ac (237 liters/ha)

Hand Motor Sprayers: 50 gal/ac (475 liters/ha)

Aerial Application: 5 gal/ac (47.5l/ha)



GENERAL APPLICATION INSTRUCTIONS

It is recommended to always test the selected dosage on a small area for any crop prior to treating the entire area, to observe for phytotoxicity.

Apply early in the morning or late in the afternoon, the cool part of the day. **DO NOT** apply during mid-day heat. The most effective ambient temperature range for application is 60-95°F (16-35°C).

Spray directly onto pest(s) in order to maximize effectiveness.

Ensure that both sides of the leaves are coated. Thorough spray coverage is essential for good pest control.

DO NOT mix ARMOREX with oxidizing agents such as bleach, bases or strong acids as they will destabilize the product.

Apply as a preventative treatment prior to insect infestation or make the first application at the first sign of mite infestation.

