

DYNAWEED

A Natural Herbicide For Pre-Emergence Weed Control

Developed by researchers at Iowa State University, this remarkable alternative to chemical herbicides offers pre-emergent control of crabgrass and other persistent, annual grassy and broadleaf weeds.

Dynaweed granules are derived from a by-product of making corn syrup. The main ingredient in Dynaweed is commonly used as a pet food ingredient. Since the discovery of its herbicidal activity in 1988, it has been thoroughly documented as an effective alternative to chemical weed controls. Dynaweed stops the root development of germinating weed seeds and without feeder roots to provide nutrition, weeds don't develop.

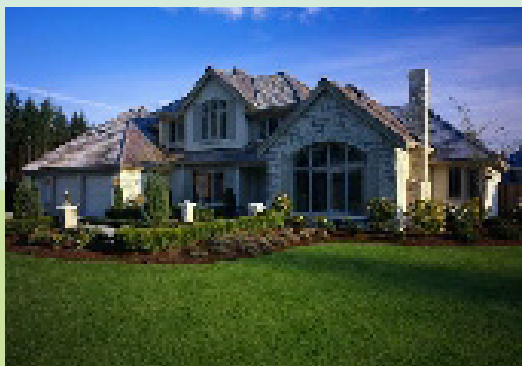
Dynaweed granules are very high in protein and, as they decompose after application, they reduce the need for nitrogen fertilizers. In university research, Dynaweed has consistently produced superior quality and color in treated plants. The unique 'weed and feed' effects of Dynaweed make it one of the most remarkable discoveries in recent agronomic history. Dynaweed pre-emergent weed control granules stop annoying crabgrass and other persistent weeds before they start!

DYNAWEED BENEFITS:

- CHEMICAL-FREE, PRE-EMERGENCE WEED CONTROL
- NON-PHYTOTOXIC; CAN BE USED ON SENSITIVE PLANTS
- NO SPECIAL HANDLING OR PROTECTIVE CLOTHING REQUIRED
- 100% NATURAL AND SAFE FOR THE ENVIRONMENT
- EXEMPT FROM RESIDUE TOLERANCE REQUIREMENTS

Grounds managers that are looking for a non-chemical alternative have had success with corn gluten meal. Harley Carter, athletic director at Maharishi School in Fairfield, Iowa learned about corn gluten from Soil Technologies Corp. in Fairfield. The Maharishi School's unirrigated soccer field was initially seeded in a mix of bluegrass and rye. "The grass hadn't grown in well and the field was in dire need of weed control," he said. "I wanted a natural means of controlling weeds". After hearing about Dynaweed, Carter decided to give it a try. Corn gluten has been applied to the field each spring for 4 years now. "We apply it only in the spring because we're playing on the field in the fall," he noted. "It takes time, but there's no doubt that it works. Our soccer field looks as good as anybody's in the league now."

Pg. 34, Landscape Superintendent magazine, August, 2005



100% Natural and Safe!



SOILTECH
Making Golf Greener

Soil Technologies Corp.

2103 185th Street, Fairfield, IA 52556, U.S.A.

1-641-472-3963 FAX: 1-641-472-6189

www.soiltechcorp.com

DYNAWEED

TECHNICAL DATA

PURPOSE: Dynaweed is a natural product for the pre-emergence control of buckhorn plantain, curly dock, crabgrass, dandelions, smart weed, redroot pigweed, purslane, lambsquarters, foxtail, barnyard grass, creeping bentgrass and Bermuda grass. A pre-emergence herbicide is capable of controlling weeds only at the time of germination. The product must be applied before weed seeds germinate. There is no post-emergence activity.

COMPOSITION: Dynaweed is derived from a by-product of the wet milling process of making corn starch or corn syrup. It is 60% protein and, as a result, you should reduce or eliminate regular fertilization programs for at least 6-8 weeks after application of Dynaweed. If fertilization is to be applied at the same time as Dynaweed, the fertilizer should be low in nitrogen (N), and higher in phosphorous (P), and potassium (K). There are no re-entry restrictions following use of Dynaweed. People, pets and animals may use the treated areas immediately following application

APPLICATION

METHOD: Use on perennial crops such as turfgrass, ornamentals, berries, grapes, herbs and ginseng as a pre-emergence herbicide. DO NOT use on crops which have been recently sown. Although rains usually provide

adequate moisture, you may want to water in Dynaweed application. If you do water, water deeply and infrequently, allowing the soil surface to dry. To be most effective, Dynaweed requires a drying period. The soil surface should not be continuously wet, as would be the case with automatic irrigation systems. Apply Dynaweed with a standard fertilizer spreader.

APPLICATION RATES:

Use the higher rate of application shown below if you plan to apply Dynaweed one time per year. Use the lower rate of application

"When modern lawn-care began in the late 1960's, there was little concern about the use of pesticides. Things have changed considerably since then."

*Dr. Nick Christians
Iowa State University*

shown if you plan to make multiple applications.

SPRING APPLICATION:

For control of spring germinating weeds, apply 15-20 lbs. per 1000 sq. ft. at the time forsythia begins to bloom in your area. As an alternate timing guide, apply when crocuses have finished blooming or when the first daffodils or jonquils begin to bloom. (To use bulb blooming times as a guide, bulbs must be located 15 ft. or more away from any foundation.)

FALL APPLICATION:

For fall germinating weeds, apply 15-20 lbs. per 1000 sq. ft. following the hot, dry stress period of mid-summer. In most regions of the USA, application time would be from August 15 to September 30.

